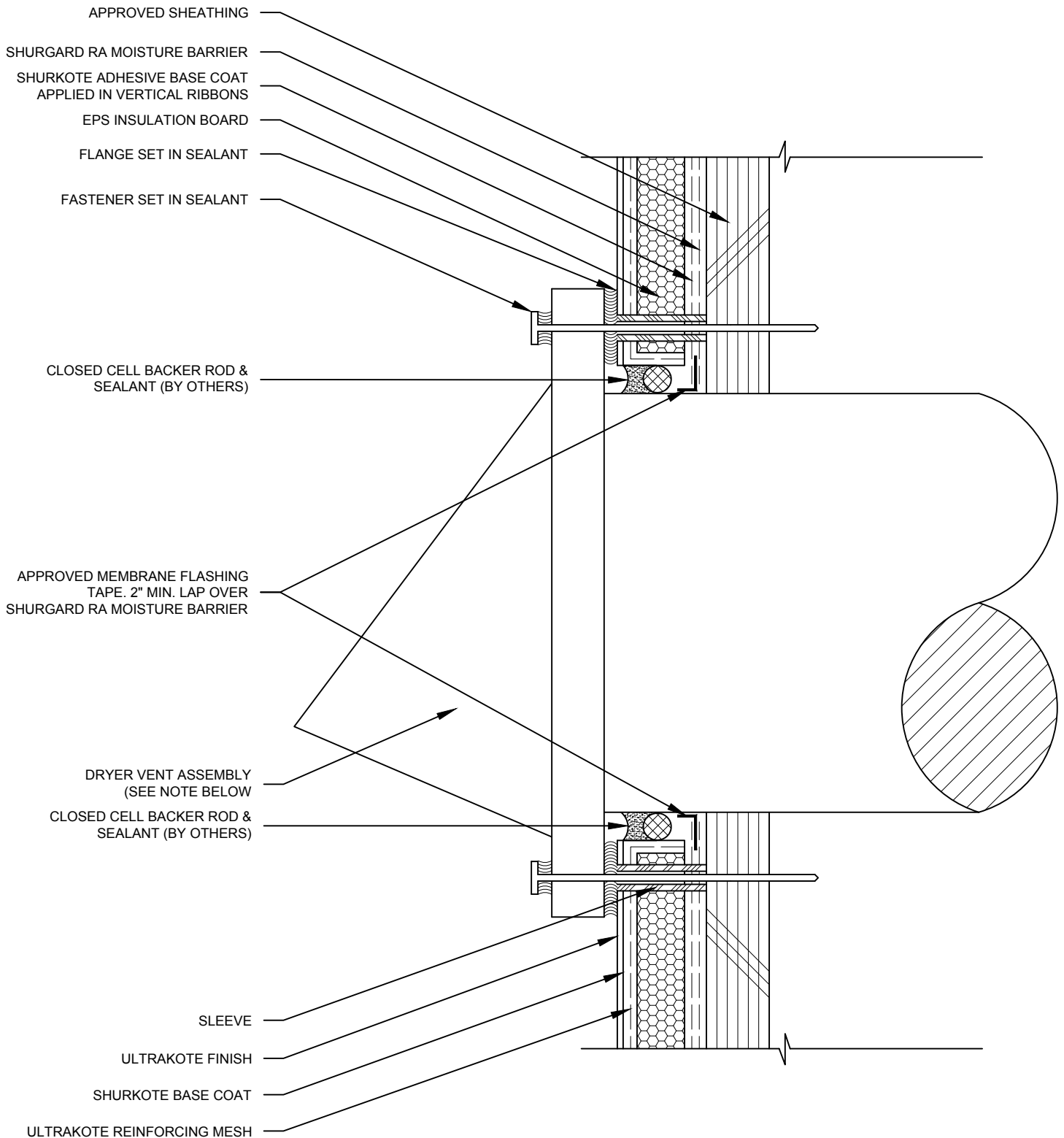


TYPICAL DRYER VENT

WM-RA 6.1



NOTE: DRYER VENT ASSEMBLY MUST B E SUPPLIED AS TWO INDEPENDENT PARTS. SHEET METAL DUCT MUST BE INSTALLED PRIOR TO EIFS INSTALLATION TO INSTALL MEMBRANE FLASHING. TAPE SEAL BACKER ROD AND SEALANT TO BE APPLIED PRIOR TO DRYER VENT COVER ATTACHMENT.